

Emerald City

Item No.:

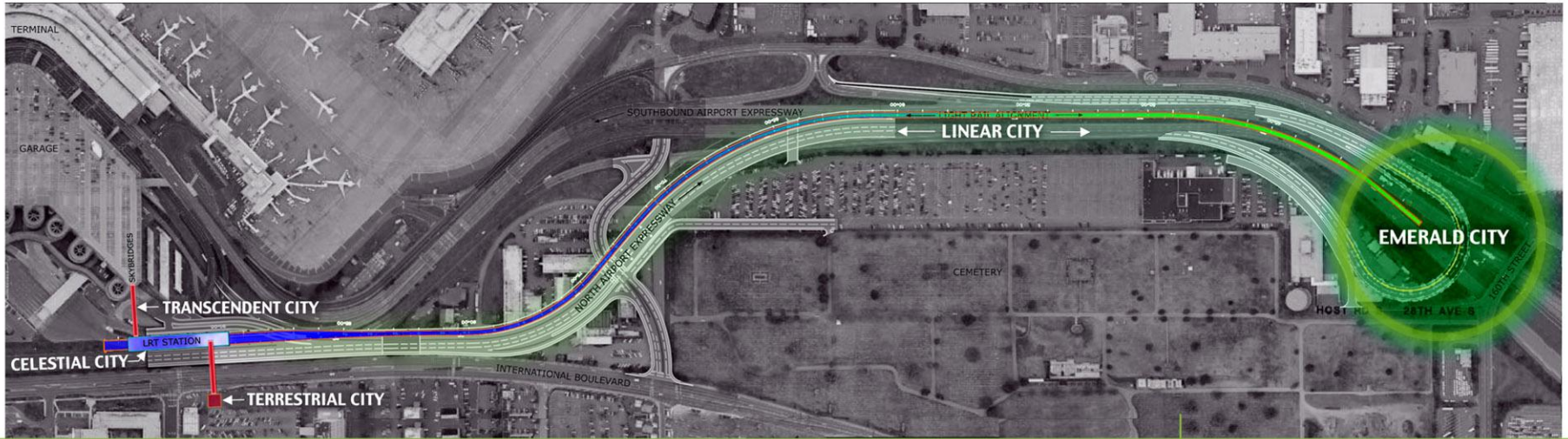
6b Supp 1

Date of Meeting: December 15, 2009



HADDAD|DRUGAN, artists

NORTH ENTRY ART PLAN



NORTH AIRPORT ENTRY ART PLAN

Conceptual Vision

Continuous Cities. Two concepts define the art plan. The first, one of Continuous Cities, implies that all of the art projects are linked into a continuous terrain, or are possibly all the same place viewed through different perspectives. The place they are interpreting is an amalgam of the Airport, the Pacific Northwest, the World. The desired result is that experiencing one artwork sheds new meaning on the others, in the manner of Italo Calvino's *Invisible Cities*:

At times all I need is a brief glimpse, an opening in the midst of an incongruous landscape, a glint of lights in the fog, the dialogue of two passersby meeting in the crowd, and I think that, setting out from there, I will put together, piece by piece, the perfect city, made of fragments mixed with the rest, of instants separated by intervals, of signals one sends out, not knowing who receives them. If I tell you that the city toward which my journey tends is discontinuous in space and time, now scattered, now more condensed, you must not believe the search for it can stop. Perhaps while we speak, it is rising...

To manifest this concept, each of the art projects has been given a moniker that identifies it as a type of "city." The term "city" is being used here not in reference to actual cities of the area (such as the City of SeaTac), but in association with utopian theory (as in Calvino's *Invisible Cities* and Colin Rowe's *Collage City*).

Transformation. The second conceptual thread that ties the projects together is the process of Transformation, occurring along axes on which the Continuous Cities are placed, and also within the individual projects.

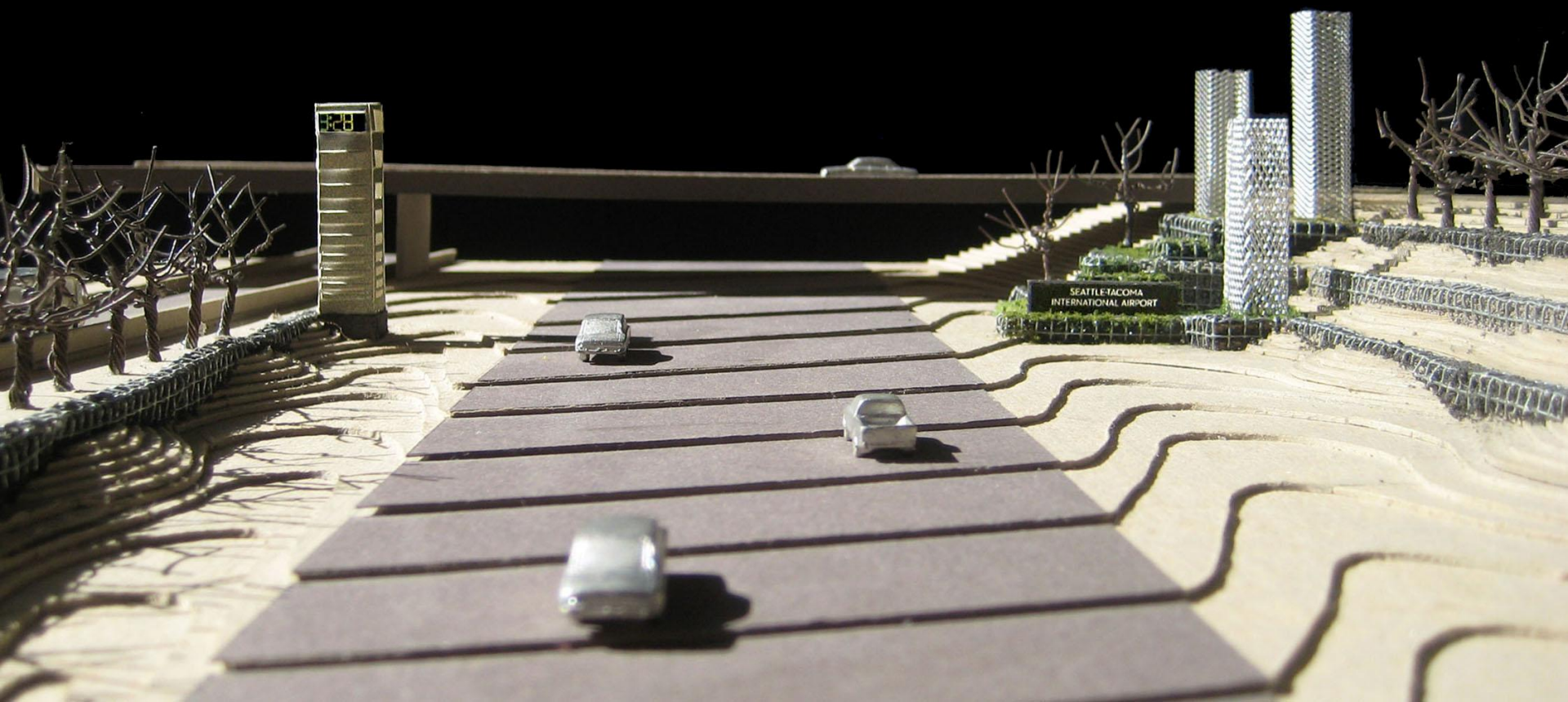
Transformation expresses personal growth through travel, dreams and new beginnings associated with the frontier quality of the American West, and the continuous reinvention of local technology and landscape that characterizes the Airport as well as the region. Transformation is also implicit in the systems and atmospheric effects that run through the sites.

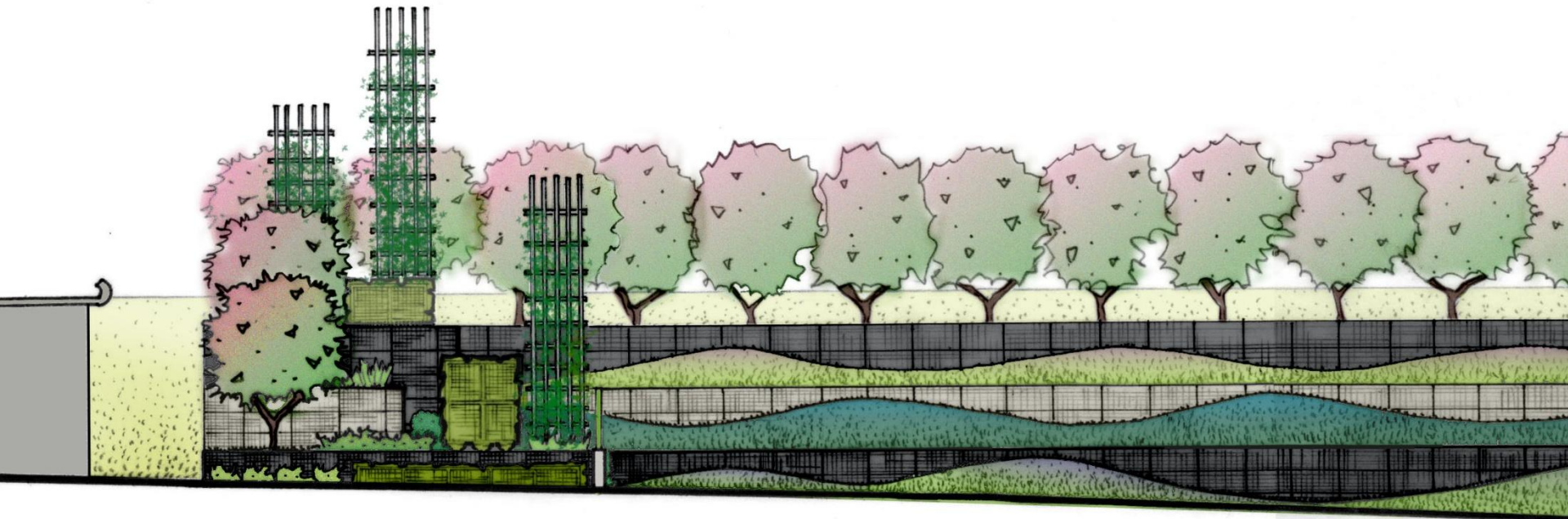


'EMERALD CITY' SITE

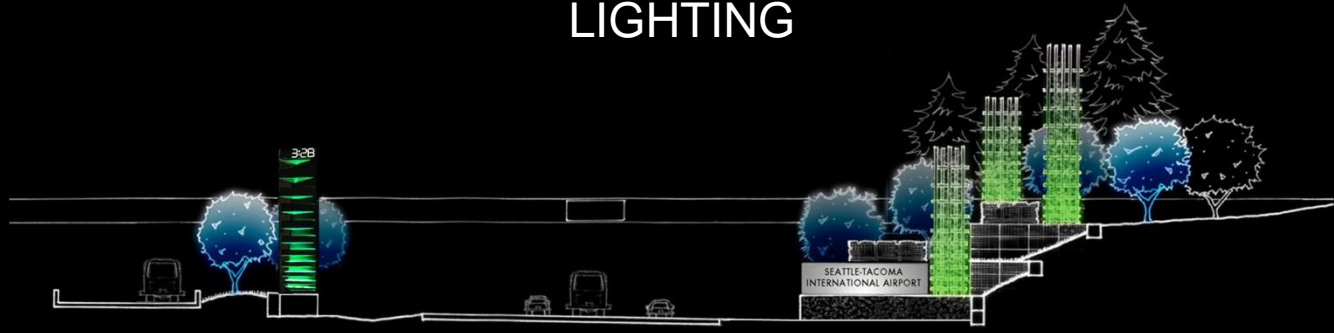


'EMERALD CITY' ART & LANDSCAPE PORTAL





LIGHTING

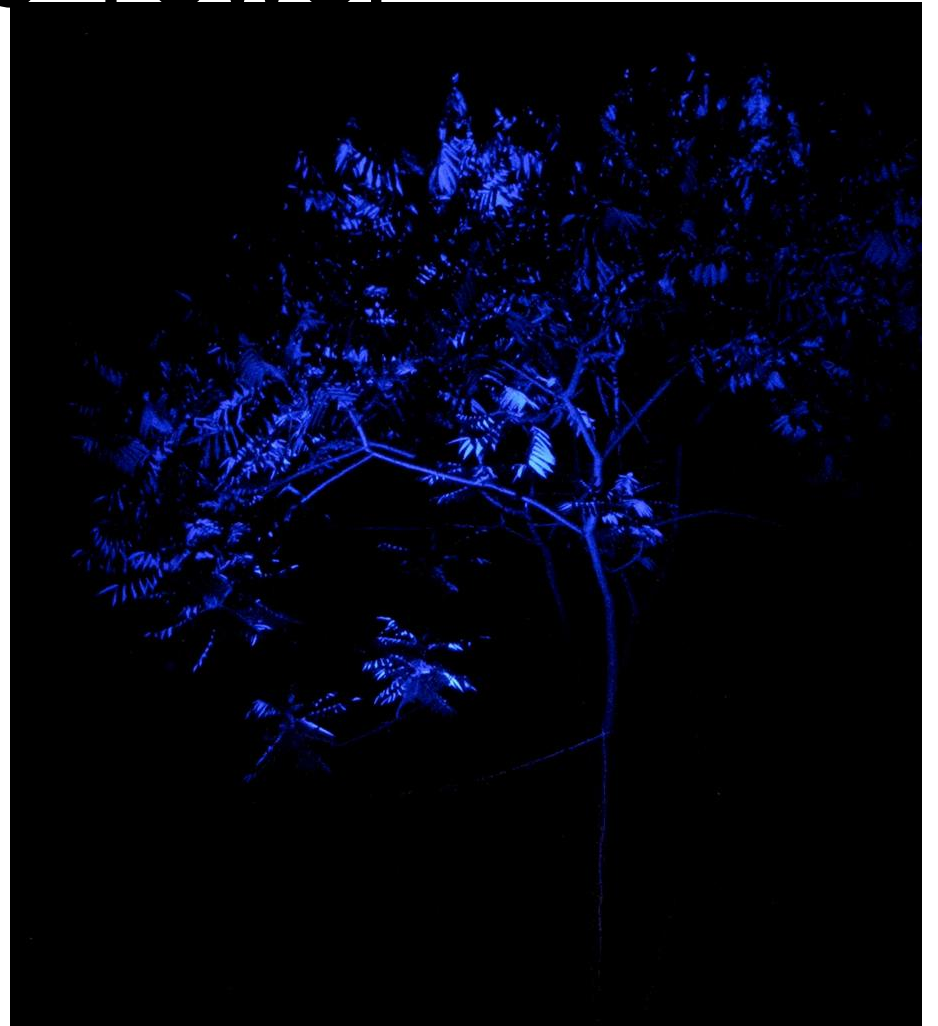
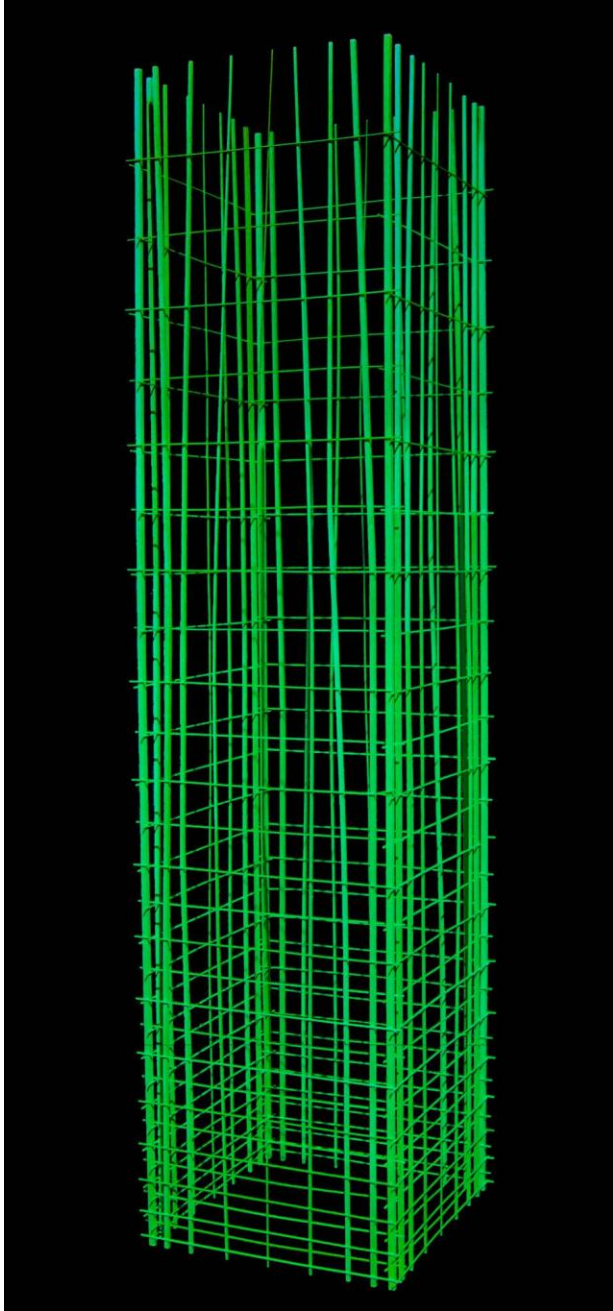


ELEVATION

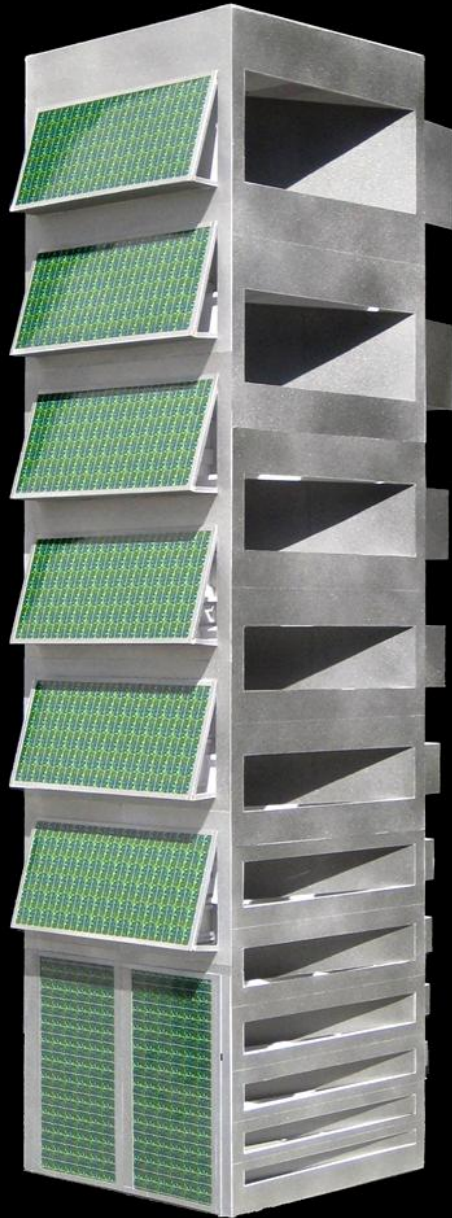
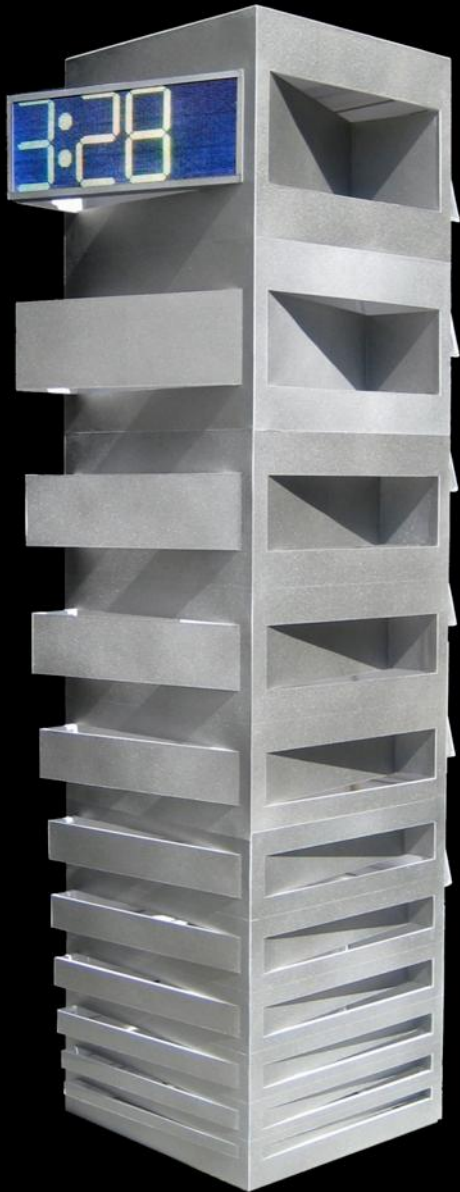


PLAN

Vine Tower



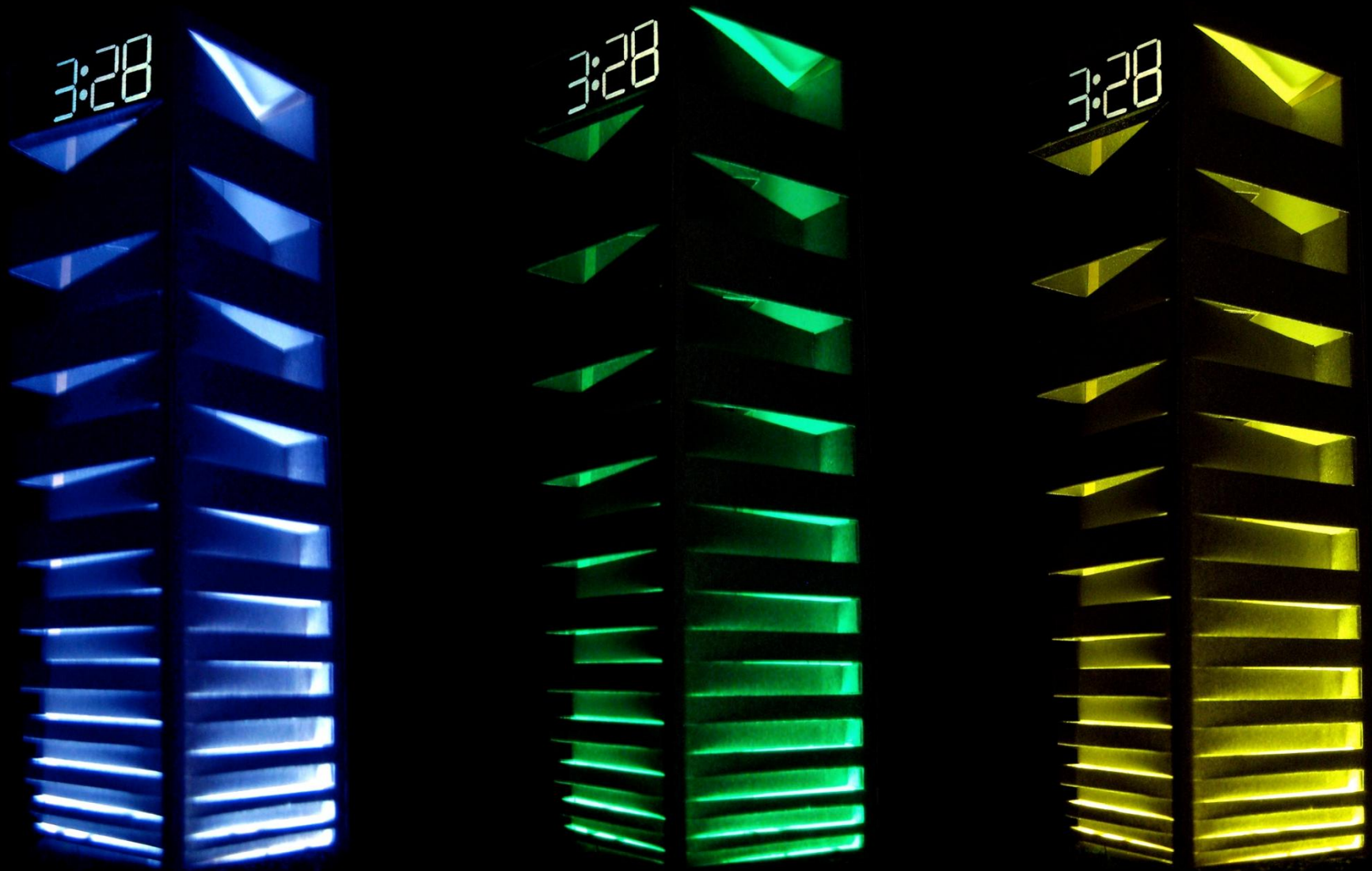
CLOCK TOWER



STAINLESS STEEL
CLADDING



EMERALD GREEN
PHOTOVOLTAIC
CELLS ON BACK OF
CLOCK TOWER



UP-LIGHTS INSIDE CLOCK TOWER CHANGE COLOR WITH AIR TEMPERATURE

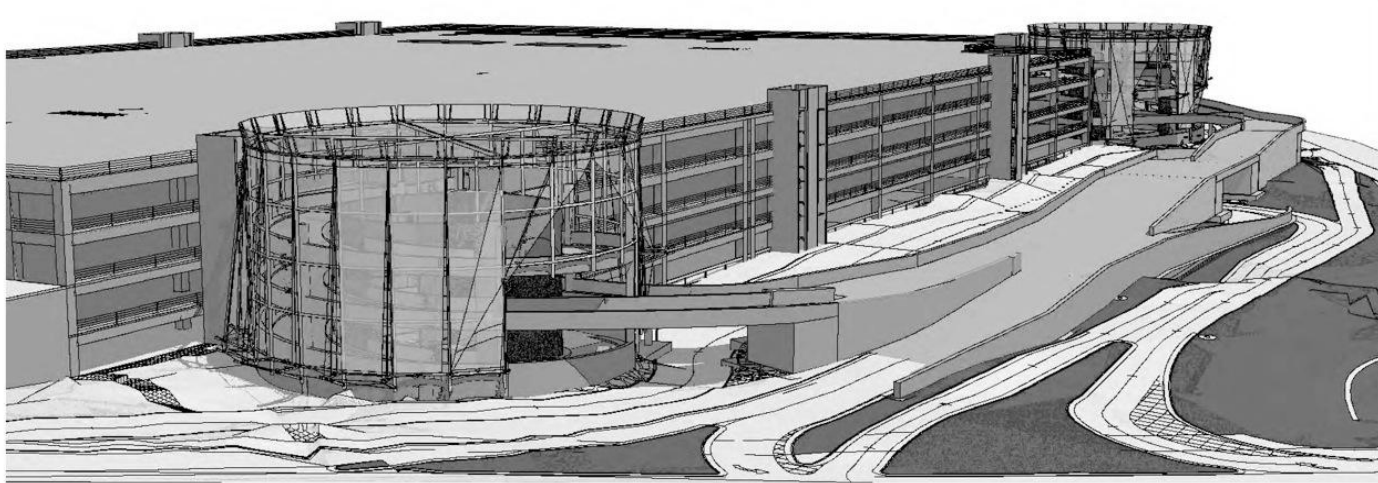
ENTRY SIGN



SANDBLASTED CHARCOAL CONCRETE BACKGROUND



STAINLESS STEEL LETTERS



RENTAL CAR FACILITY
SEATAC INTERNATIONAL AIRPORT
ARTWORK: HELIX SCRIM
90% CONSTRUCTION DOCUMENT

Buster Simpson

www.bustersimpson.net

901 Yakima Avenue S., Seattle, WA 98144 206.328.6212 tel & fax buster@bustersimpson.net

ARCHITECT DESIGNED SCREEN

